

DRAWING TITLE
Floor Plan - Basement Level 2

DRAWING No
DA 200

SCALE AT A3
1:250,

DATE
30/09/2010

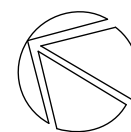
PROJECT No
2010017

REVISION
A

DRAWN
SB

ITEM No
37944

"Copyright JPR Architects Pty Ltd.
Reproduction of the whole or part of this documents constitutes an infringement of copyright. The information, ideas and concepts contained in this document are confidential and the recipient of this document is prohibited from disclosing such information, ideas and concepts to any person without the prior written consent of JPR Architects Pty Ltd."

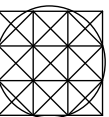


PROJECT ADDRESS
200-220 Pacific Highway
Crows Nest

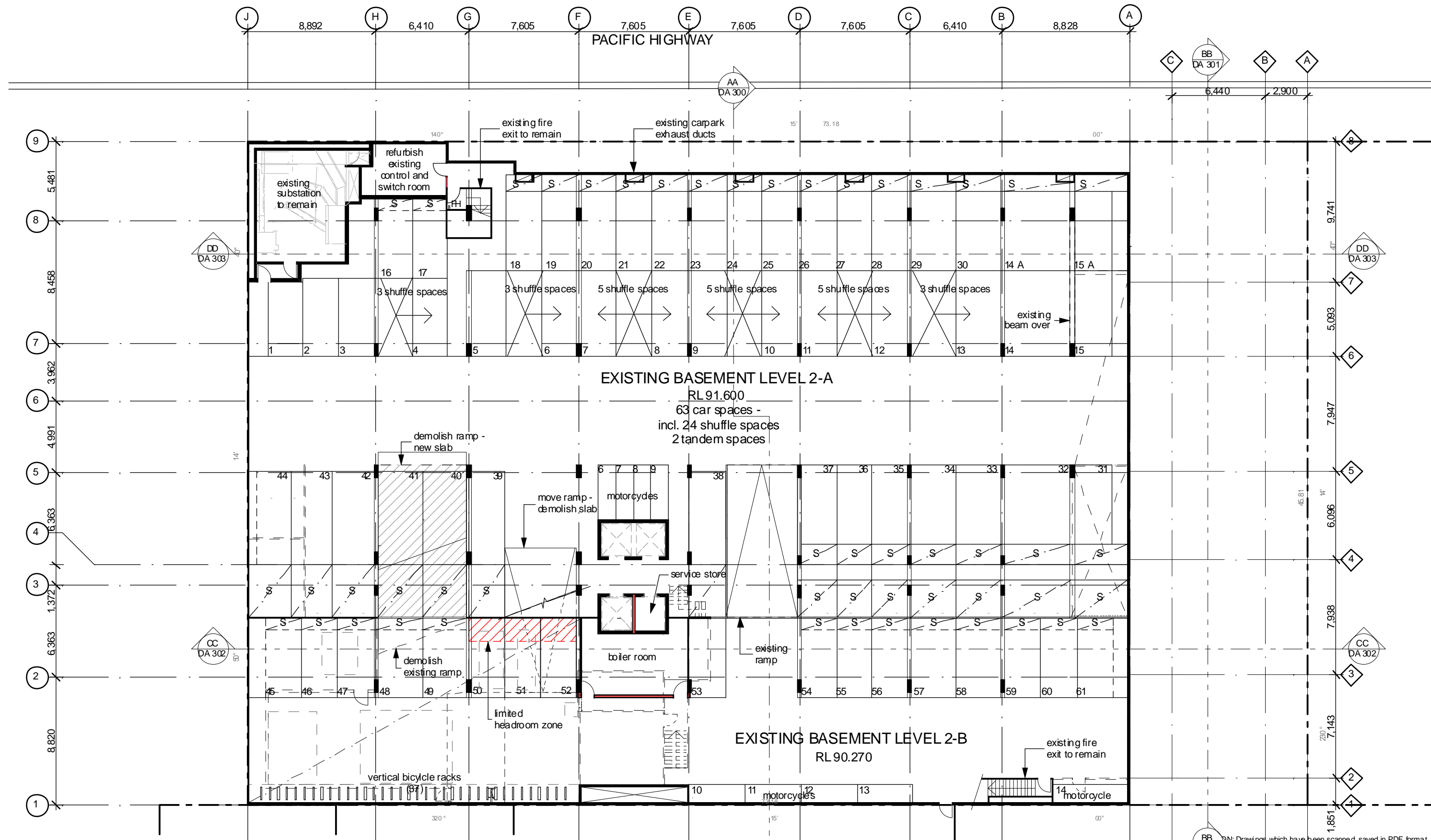
CLIENT
Barana Group

ARCHITECT

jpr architects pty limited
20/50 Stanley Street East Sydney NSW 2010 tel +61 2 9366 1133 fax +61 2 9366 1166 email jpr@jpra.com.au



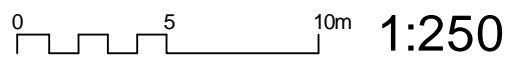
ACN 004 013 165



KEY:

EXISTING WALLS

PROPOSED WALLS



FOR DEVELOPMENT APPLICATION

200-220 Pacific Highway

DRAWING TITLE
Floor Plan - Basement Level 2

DRAWING No
DA 200

SCALE AT A3
1:250,

DATE
30/09/2010

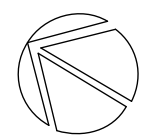
PROJECT No
2010017

REVISION
A

DRAWN
SB

ITEM No
37944

"Copyright JPR Architects Pty Ltd. Reproduction of the whole or part of this documents constitutes an infringement of copyright. The information, ideas and concepts contained in this document are confidential and the recipient of this document is prohibited from disclosing such information, ideas and concepts to any person without the prior written consent of JPR Architects Pty Ltd."



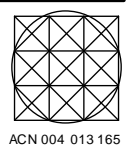
PROJECT ADDRESS
200-220 Pacific Highway
Crows Nest

CLIENT
Barana Group

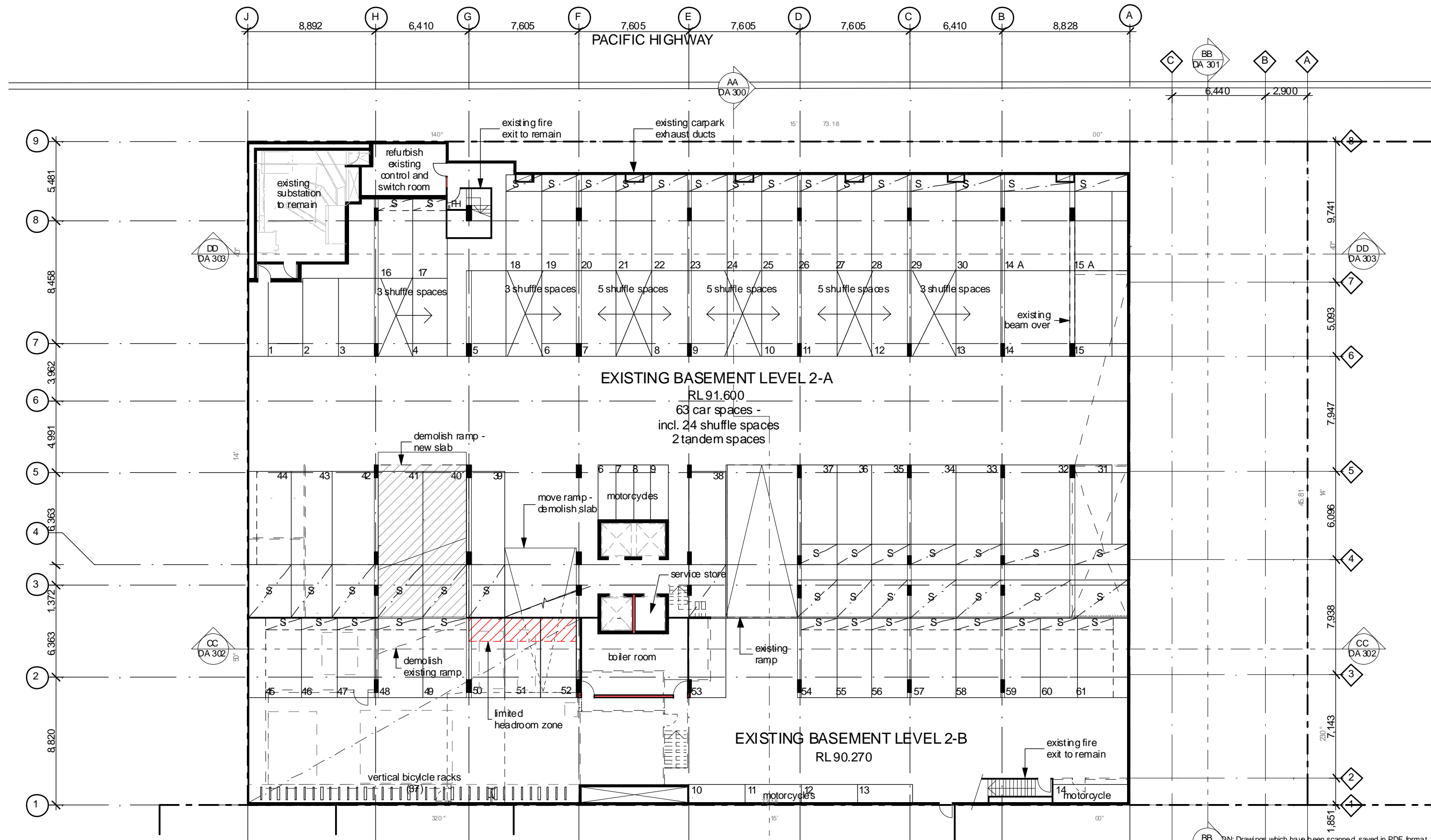
ARCHITECT

jpr architects pty limited

20/50 Stanley Street East Sydney NSW 2010 tel +61 2 9366 1133 fax +61 2 9366 1166 email jpr@jpra.com.au



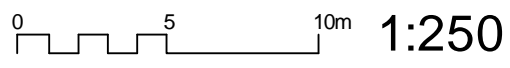
BB...DN: Drawings which have been scanned, saved in PDF format and/or reprinted, other than by JPRA, may not be to scale and should not be scaled or relied on for are a calculations



KEY:

EXISTING WALLS

PROPOSED WALLS



FOR DEVELOPMENT APPLICATION

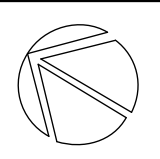
200-220 Pacific Highway

DRAWING TITLE
Floor Plan - Basement Level 2

DRAWING No
DA 200

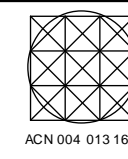
SCALE AT A3 1:250,	DATE 30/09/2010	PROJECT No 2010017
REVISION A	DRAWN SB	ITEM No 37944

"Copyright JPR Architects Pty Ltd. Reproduction of the whole or part of this documents constitutes an infringement of copyright. The information, ideas and concepts contained in this document are confidential and the recipient of this document is prohibited from disclosing such information, ideas and concepts to any person without the prior written consent of JPR Architects Pty Ltd."

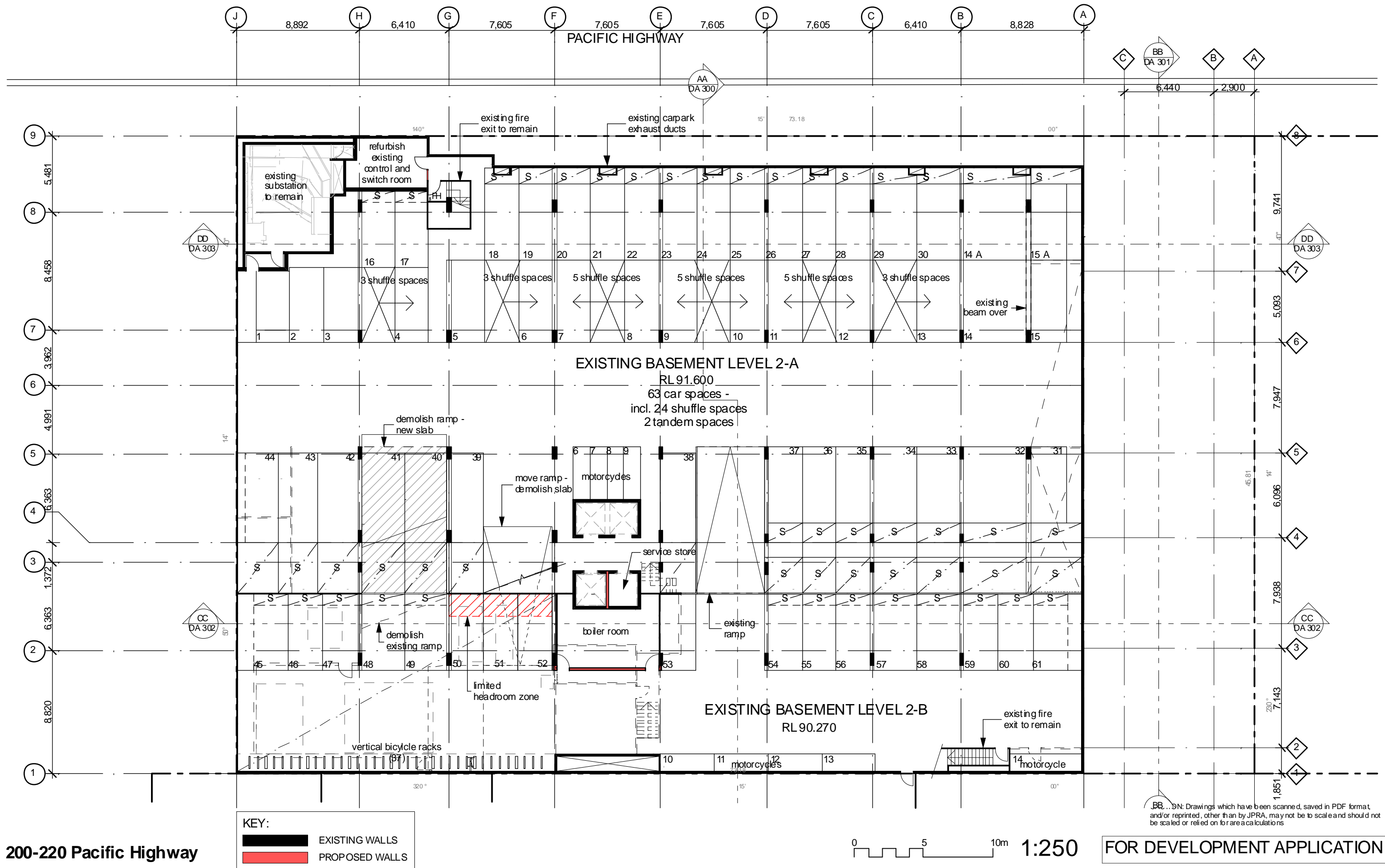


PROJECT ADDRESS
200-220 Pacific Highway
Crows Nest
CLIENT
Barana Group

ARCHITECT
jpr architects pty limited
20/50 Stanley Street East Sydney NSW 2010 tel +61 2 9366 1133 fax +61 2 9366 1166 email jpr@jpra.com.au
ACN 004 013 165



BB...DN: Drawings which have been scanned, saved in PDF format and/or reprinted, other than by JPRA, may not be to scale and should not be scaled or relied on for are a calculations



DRAWING TITLE
Floor Plan - Basement Level 2

DRAWING No
DA 200

SCALE AT A3
1:250,

DATE
30/09/2010

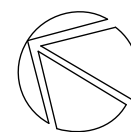
PROJECT No
2010017

REVISION
A

DRAWN
SB

ITEM No
37944

"Copyright JPR Architects Pty Ltd.
Reproduction of the whole or part of this documents constitutes an infringement of copyright. The information, ideas and concepts contained in this document are confidential and the recipient of this document is prohibited from disclosing such information, ideas and concepts to any person without the prior written consent of JPR Architects Pty Ltd."

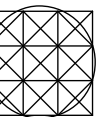


PROJECT ADDRESS
200-220 Pacific Highway
Crows Nest

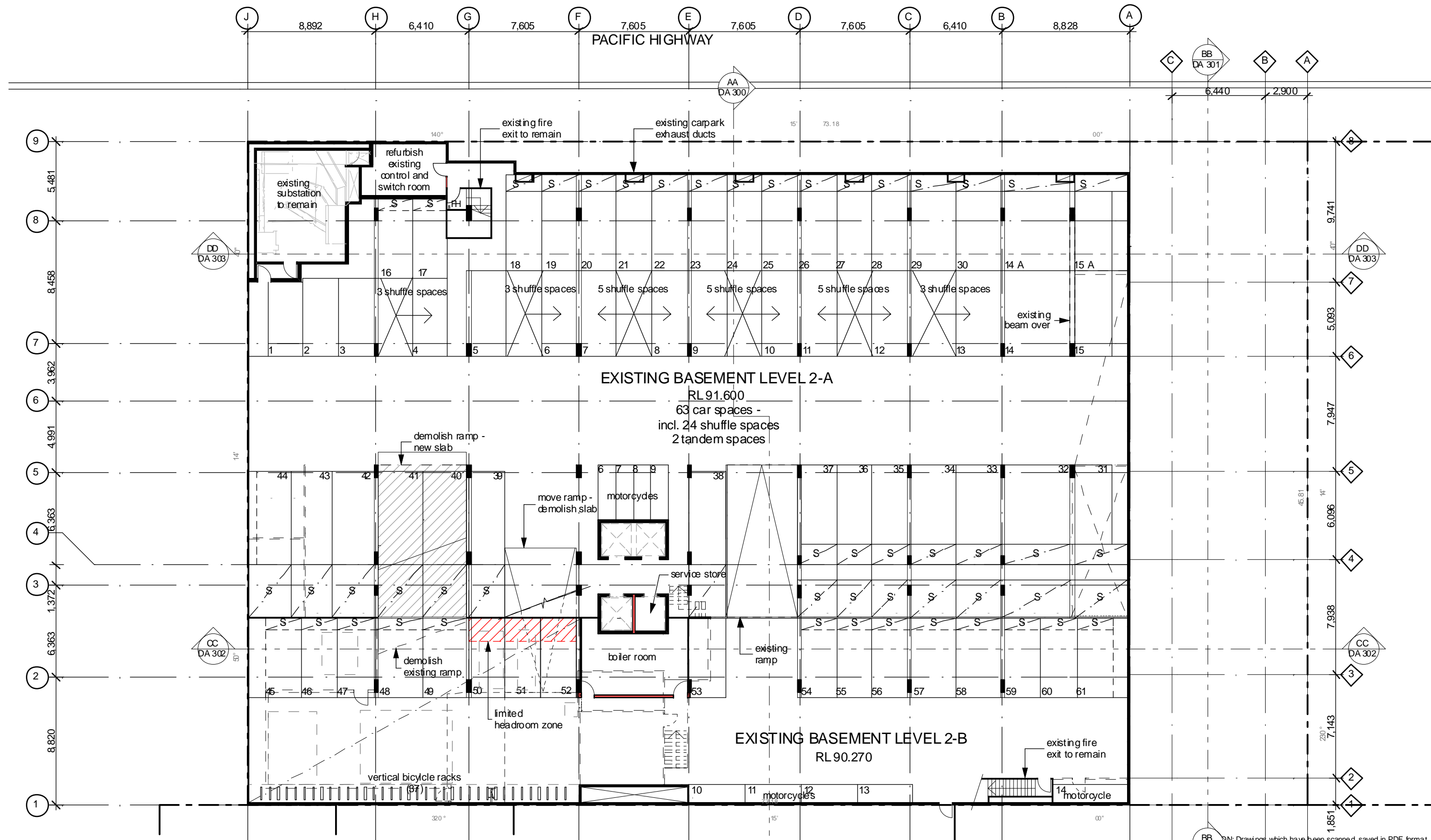
CLIENT
Barana Group

ARCHITECT

jpr architects pty limited
20/50 Stanley Street East Sydney NSW 2010 tel +61 2 9366 1133 fax +61 2 9366 1166 email jpr@jpra.com.au



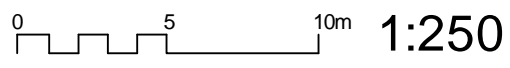
ACN 004 013 165



KEY:

EXISTING WALLS

PROPOSED WALLS



FOR DEVELOPMENT APPLICATION

200-220 Pacific Highway

DRAWING TITLE
Floor Plan - Basement Level 2

DRAWING No
DA 200

SCALE AT A3
1:250,

DATE
30/09/2010

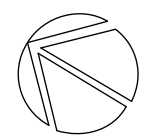
PROJECT No
2010017

REVISION
A

DRAWN
SB

ITEM No
37944

"Copyright JPR Architects Pty Ltd. Reproduction of the whole or part of this documents constitutes an infringement of copyright. The information, ideas and concepts contained in this document are confidential and the recipient of this document is prohibited from disclosing such information, ideas and concepts to any person without the prior written consent of JPR Architects Pty Ltd."



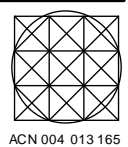
PROJECT ADDRESS
200-220 Pacific Highway
Crows Nest

CLIENT
Barana Group

ARCHITECT

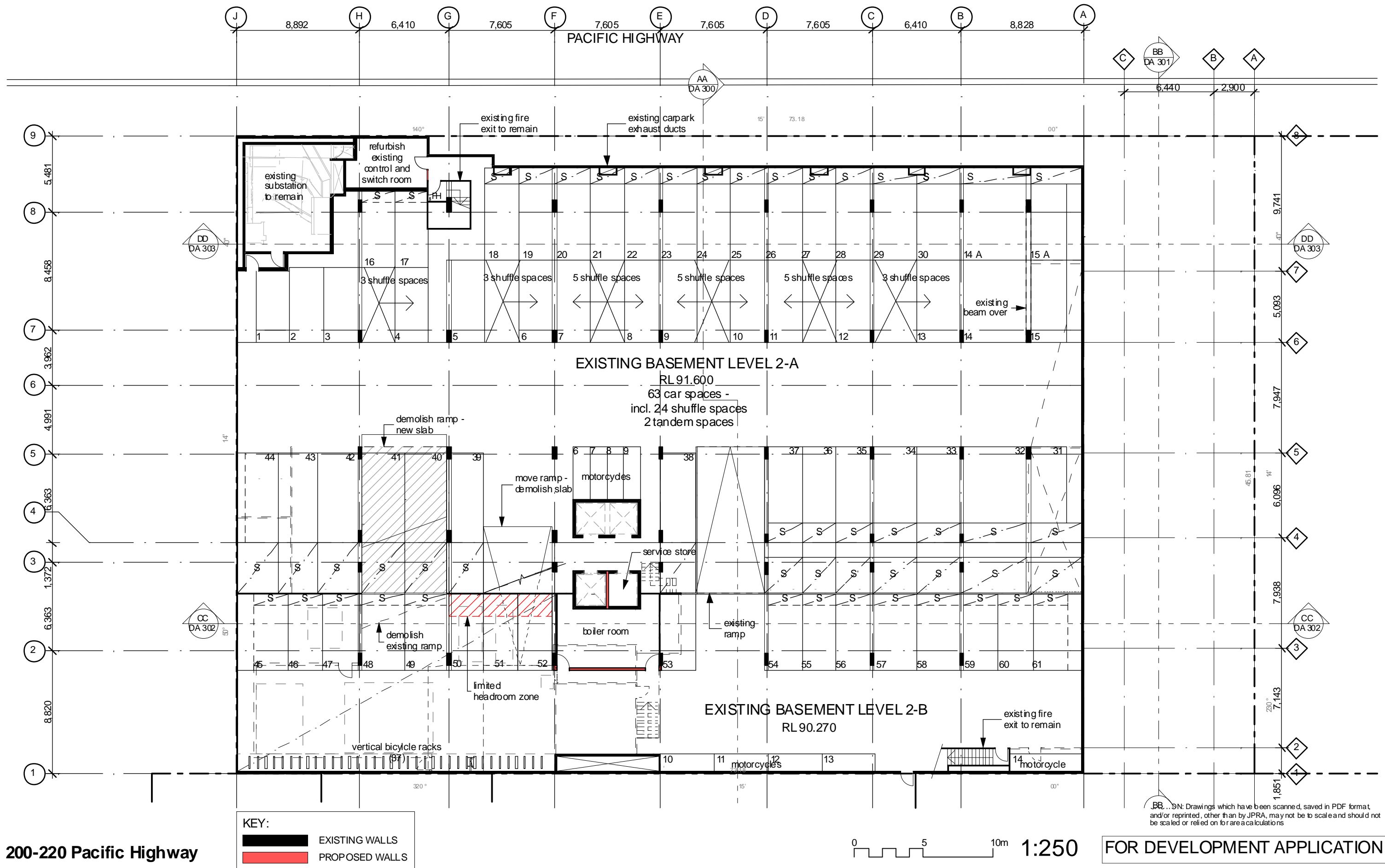
jpr architects pty limited

20/50 Stanley Street East Sydney NSW 2010 tel +61 2 9366 1133 fax +61 2 9366 1166 email jpr@jpra.com.au



ACN 004 013 165

BB...DN: Drawings which have been scanned, saved in PDF format and/or reprinted, other than by JPRA, may not be to scale and should not be scaled or relied on for are a calculations



DRAWING TITLE
Floor Plan - Basement Level 2

DRAWING No
DA 200

SCALE AT A3
1:250,

DATE
30/09/2010

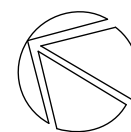
PROJECT No
2010017

REVISION
A

DRAWN
SB

ITEM No
37944

"Copyright JPR Architects Pty Ltd.
Reproduction of the whole or part of this documents constitutes an infringement of copyright. The information, ideas and concepts contained in this document are confidential and the recipient of this document is prohibited from disclosing such information, ideas and concepts to any person without the prior written consent of JPR Architects Pty Ltd."

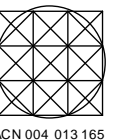


PROJECT ADDRESS
200-220 Pacific Highway
Crows Nest

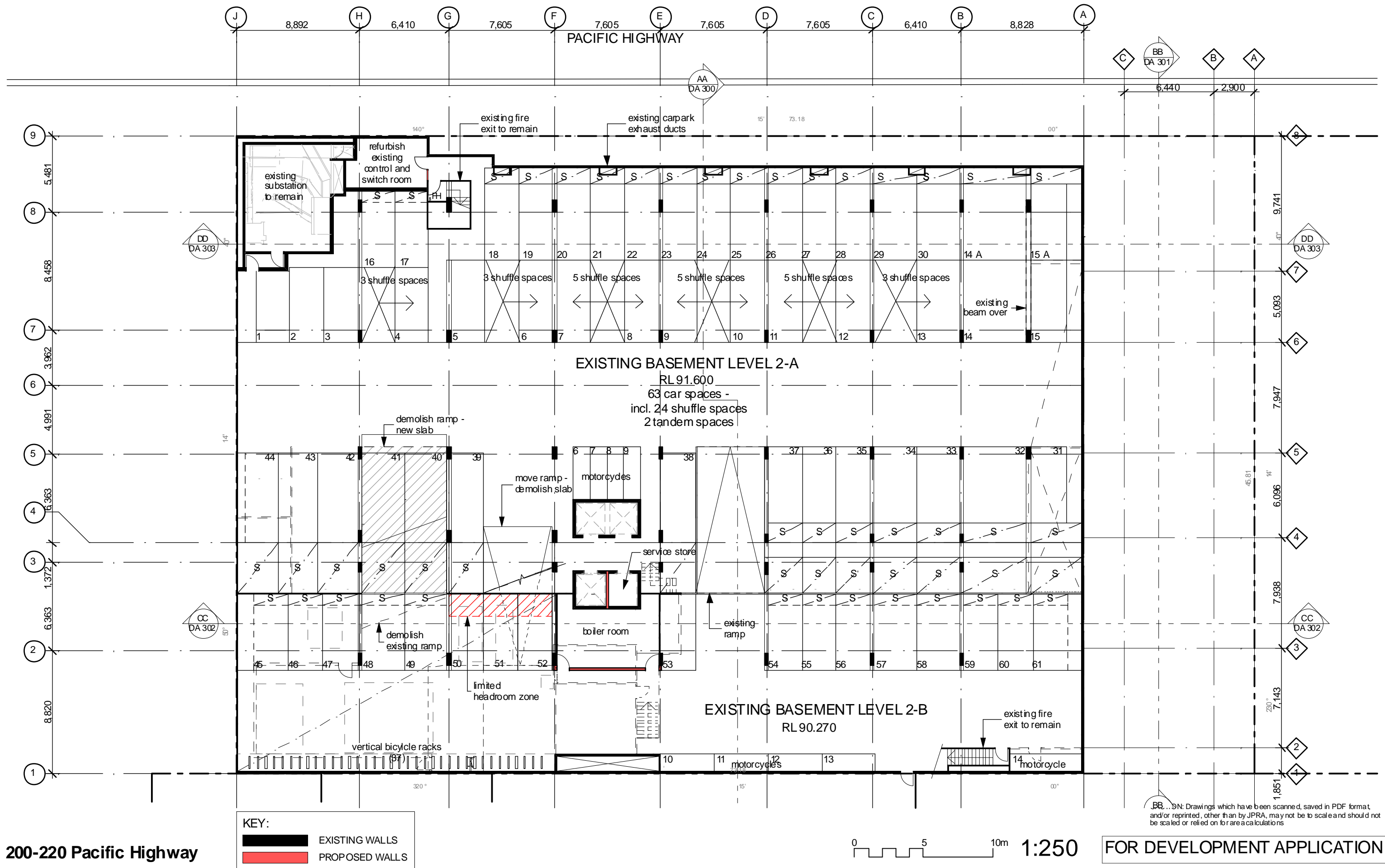
CLIENT
Barana Group

ARCHITECT

jpr architects pty limited
20/50 Stanley Street East Sydney NSW 2010 tel +61 2 9366 1133 fax +61 2 9366 1166 email jpr@jpra.com.au



ACN 004 013 165

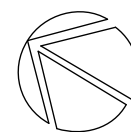


DRAWING TITLE
Floor Plan - Basement Level 2

DRAWING No
DA 200

SCALE AT A3 1:250,	DATE 30/09/2010	PROJECT No 2010017
REVISION A	DRAWN SB	ITEM No 37944

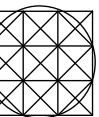
"Copyright JPR Architects Pty Ltd.
Reproduction of the whole or part of this documents constitutes an infringement of copyright. The information, ideas and concepts contained in this document are confidential and the recipient of this document is prohibited from disclosing such information, ideas and concepts to any person without the prior written consent of JPR Architects Pty Ltd."



PROJECT ADDRESS
200-220 Pacific Highway
Crows Nest
CLIENT
Barana Group

ARCHITECT

jpr architects pty limited
20/50 Stanley Street East Sydney NSW 2010 tel +61 2 9366 1133 fax +61 2 9366 1166 email jpr@jpra.com.au



ACN 004 013 165